

Rab4A

Catalog Number: 21158

Gene Symbol: RAB4A

Description: Anti-Rab4A Rabbit Polyclonal Antibody

Background: Rab4A belongs to the small GTPase Rab family. It interacts with RAB11FIP1, RABEP1, ZFYVE20, RUFY1, SGSM1, SGSM2 and SGSM3. It participates in protein transport and in vesicular traffic.

Immunogen: Purified Rab4A protein.

Tested Applications: ELISA, WB, IHC, IP

Recommended Dilutions:

ELISA	1:100-1:5000
WB	1:100-1:2000
IHC	1:10-100

Concentration: 0.15 mg/ml

Host: Rabbit

Clonality: Polyclonal

Purity: Purified from serum

Format: Liquid

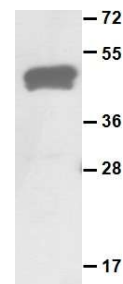
Preservative: No

Constituents: PBS (without Mg²⁺ and Ca²⁺), pH7.4, 150 mM NaCl, 50% glycerol

Species Reactivity: Rab4A antibody recognizes Rab4A proteins from vertebrates.

Storage Conditions: Store at -20°C. Avoid freeze / thaw cycles

Western blot:



Purified GST-tagged Rab4A proteins (Cat. # 10130) were used for Western blot with anti-Rab4A polyclonal antibody (Cat. # 21158).

FOR RESEARCH USE ONLY. NOT FOR DIAGNOSTIC APPLICATIONS